



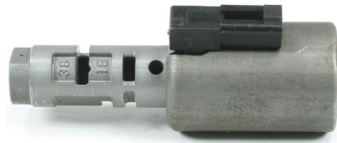
# AW-6 Linear Solenoid Installation Guide

Rostra Precision Controls, 2519 Dana Drive, Laurinburg, NC 28352

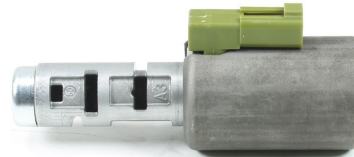
www.RostraTransmission.com 800-782-3379

## TF-60 (09G) and TR-60 (09D) Series

52-0488

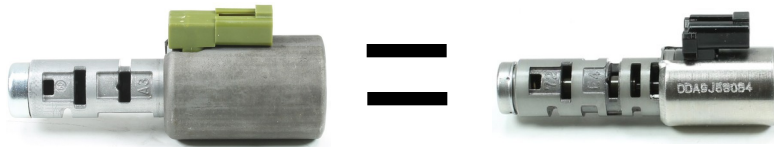


52-0489



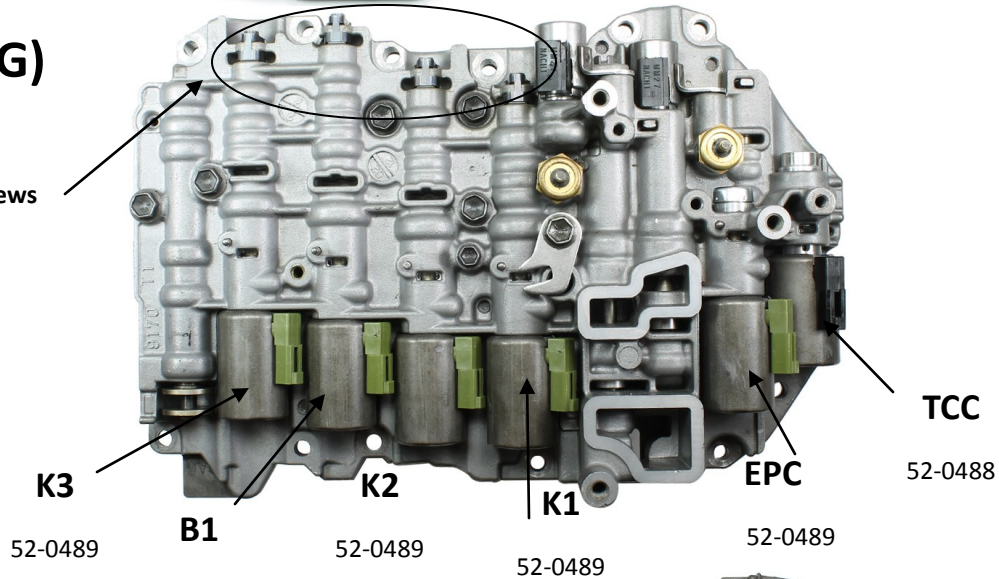
### Note:

- Rostra solenoids are compatible with both large and small can varieties of OE solenoids.
- OE Clutch Solenoids use various color connectors. Rostra Clutch Solenoids are universal and interchangeable.



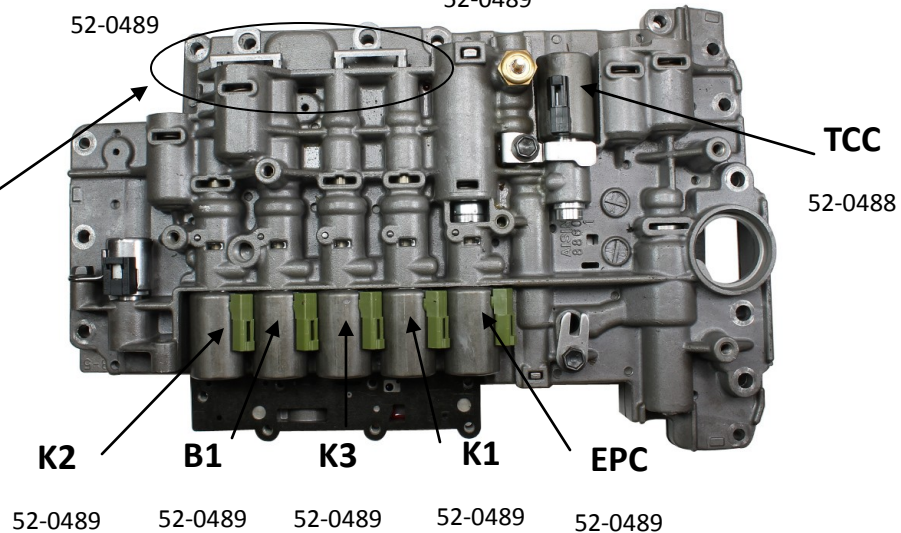
### TF-60 (09G)

Adjustment Screws



### TR-60 (09D)

Adjustment Screws





# AW-6 Linear Solenoid Installation Guide

Rostra Precision Controls, 2519 Dana Drive, Laurinburg, NC 28352

www.RostraTransmission.com 800-782-3379

### General note:

To ensure proper vehicle operation special attention must be paid to key wears areas within valve body. If worn they must be repaired before installation of the Rostra solenoids.

**All Rostra solenoids have been pre-calibrated and tested to match the nominal Original Equipment calibration of a properly functioning valve body. Due to variations in valve body wear and computer shift adapt strategies, solenoids adjustment may be required.**

### Adjustment Instructions:

Use the chart below to resolve drivability issues. Turn the adjustment screw on the valve body that shares the bore with the solenoid that corresponds with the symptoms listed on the chart. For example, turning the K3 adjustment screw counter-clockwise would fix a 2-3 flare. For faint symptoms turn the screw 1/2 rotation. For intense symptoms turn the screw 2 complete rotations. After every adjustment perform the suggested relearn procedure.

Component	Turn Screw Clockwise (Decrease Pressure)	Turn Screw Counter-Clockwise (Increase Pressure)
B1	<ul style="list-style-type: none"> <li>• 1-2 Bind-up</li> <li>• 5-6 Bind-up</li> <li>• 3-2 Bump</li> </ul>	<ul style="list-style-type: none"> <li>• 1-2 Flare</li> <li>• 5-6 Flare</li> <li>• 3-2 Flare</li> </ul>
K1	<ul style="list-style-type: none"> <li>• Quick Harsh Drive Engagement</li> <li>• 5-4 Bump</li> </ul>	<ul style="list-style-type: none"> <li>• Delayed Harsh Drive Engagement</li> <li>• 5-4 Flare</li> </ul>
K2	<ul style="list-style-type: none"> <li>• 3-4 Bind-up</li> </ul>	<ul style="list-style-type: none"> <li>• 3-4 Flare</li> </ul>
K3	<ul style="list-style-type: none"> <li>• Quick Harsh Reverse Engagement</li> <li>• 2-3 Bind-up</li> <li>• 4-5 Bind-up</li> <li>• 4-3 Bump</li> <li>• 6-5 Bump</li> </ul>	<ul style="list-style-type: none"> <li>• Delayed Harsh Reverse Engagement</li> <li>• 2-3 Flare</li> <li>• 4-5 Flare</li> <li>• 4-3 Flare</li> <li>• 6-5 Flare</li> </ul>

### Relearn Procedure:

1. 5 Garage Shifts (PRNDL) remaining in each gear for 5 seconds.
2. 5 Light 1-4 shifts at 10% throttle under 30 MPH coming to a stop between trials.
3. 5 Medium 1-6 Shifts at 50% throttle coming to a stop between trials.
4. 5 Manual 6-1 Downshifts.

Drivability, Calibration, or Installation questions?  
Visit Rostra's website [www.RostraTransmission.com](http://www.RostraTransmission.com) for more information.